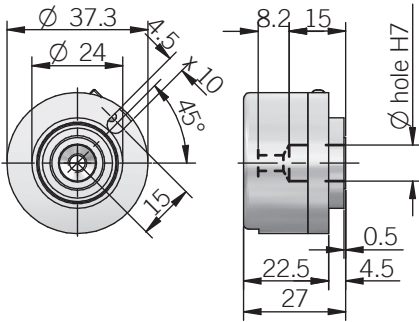




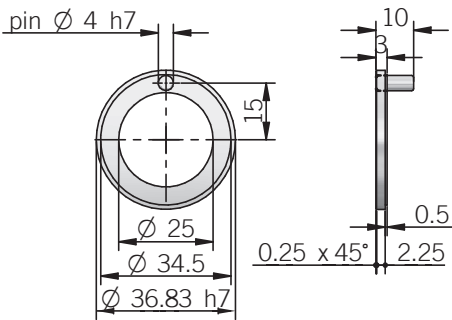
## EF 36 K



dimensions in mm

## ACCESSORIES

size 15 Resolver flange ordering code: **FLG004** (P/N 94010076)



for mounting instruction please refer to product installation notes

## CONNECTIONS

Function	Cable output
+V DC	red
0 V	black
Ch. A	green
Ch. B	yellow
Ch. Z	blue
Ch. A-	brown
Ch. B-	orange or pink
Ch. Z-	white
Ch. U	grey
Ch. V	violet
Ch. W	grey-pink
Ch. U-	red-blue
Ch. V-	white-green
Ch. W-	brown-green
⊕	shield

## ELECTRICAL SPECIFICATIONS

<b>Incremental resolution</b>	from 500 to 1024 ppr
<b>Power supply</b>	5 = 4,5 ... 5,5 V DC
<b>Current consumption without load</b>	150 mA max
<b>Max load current</b>	20 mA / channel (line driver RS-422) 30 mA / channel (NPN open collector)
<b>Output type for incremental signals</b>	line driver RS-422
<b>Output type for Hall phases</b>	NPN open collector (pull-up max +30V DC) line driver RS-422
<b>Max output frequency</b>	150 kHz
<b>Counting direction</b>	A leads B clockwise (shaft view)
<b>Electromagnetic compatibility</b>	IEC 61000-6-1 IEC 61000-6-3

## MECHANICAL SPECIFICATIONS

<b>Bore diameter</b>	$\varnothing 8 / 9,52$ (3/8") / 10 mm
<b>Enclosure rating</b>	IP 40 (IEC 60529)
<b>Max rotation speed</b>	6000 rpm
<b>Shock</b>	50 G, 11 ms (IEC 60068-2-27)
<b>Vibration</b>	5 G, 10 ... 500 Hz (IEC 60068-2-6)
<b>Moment of inertia</b>	$0,5 \times 10^{-6}$ kgm <sup>2</sup>
<b>Starting torque (at +20°C / +68°F)</b>	< 0,01 Nm
<b>Body material</b>	EN-AW 2011 aluminum
<b>Shaft material</b>	1.4305 / AISI 303 stainless steel
<b>Housing material</b>	EN-AW 2011 aluminum
<b>Bearings</b>	2 ball bearings
<b>Bearings life</b>	10 <sup>9</sup> revolutions
<b>Operating temperature</b>	-10° ... +85°C (+14° ... +185°F)
<b>Storage temperature</b>	-25° ... +85°C (-13° ... +185°F)
<b>Fixing torque for shaft fixing</b>	1,5 Nm max
<b>Weight</b>	150 g (5,29 oz)

## RESOLUTIONS

500 4 / 6 poles  
512 4 / 6 poles  
1000 6 / 8 poles  
1024 4 / 6 / 8 poles

please directly contact our offices for other pulses