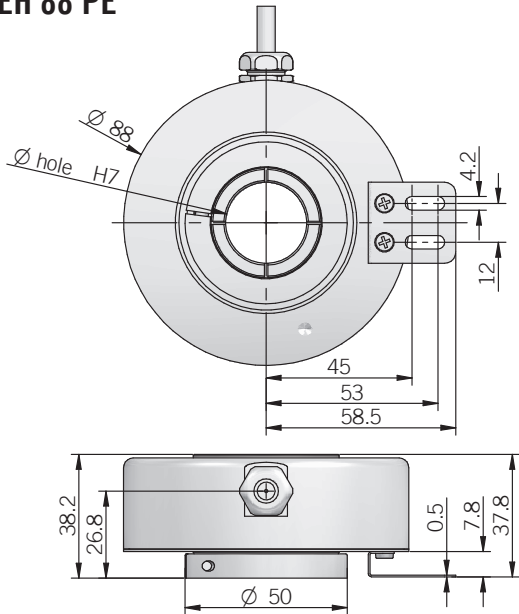
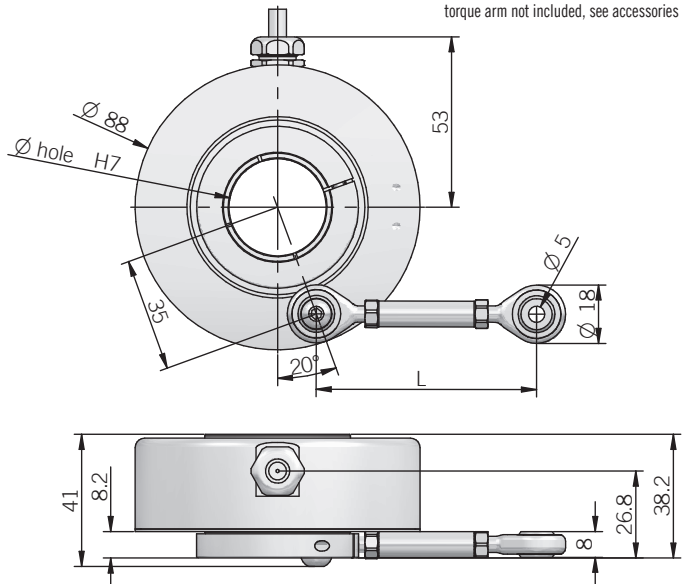




## EH 88 PE



## EH 88 PET



### ELECTRICAL SPECIFICATIONS

<b>Resolution</b>	from 500 to 2500 ppr
<b>Power supply</b>	5 = 4,5 ... 5,5 V DC 5/28 = 4,75 ... 29,4 V DC 8/24 = 7,6 ... 25,2 V DC (reverse polarity protection)
<b>Power draw without load</b>	800 mW
<b>Max load current</b>	20 mA / channel
<b>Output type*</b>	push-pull / line driver
<b>Max output frequency</b>	105 kHz
<b>Counting direction</b>	A leads B clockwise (shaft view)
<b>Electromagnetic compatibility</b>	IEC 61000-6-2 IEC 61000-6-3

\*output levels according to power supply, for further details please see under Technical basics section

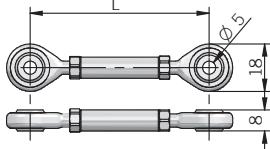
### RESOLUTIONS

500 - 512 - 720 - **1000** - **1024** - 1440 - 2500

please directly contact our offices for other pulses, preferred resolutions in bold

### ACCESSORIES

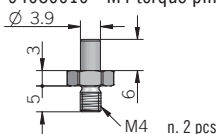
Torque arm (mod. PET)



n. 2 M5 x 12 UNI ISO 7380 included

Length	Ordering code
L = 80 ± 10mm	SN5A30 (P/N 94010061)
L = 110 ± 10mm	SN5A60 (P/N 94010070)
L = 140 ± 10mm	SN5A90 (P/N 94010071)

94080010 - M4 torque pin kit (mod. PE)



### MECHANICAL SPECIFICATIONS

<b>Bore diameter</b>	ø 25 / 30 / 35 / 38 / 40 mm
<b>Enclosure rating</b>	IP 54 (IEC 60529)
<b>Max rotation speed</b>	3000 rpm
<b>Shock</b>	50 G, 11 ms (IEC 60068-2-27)
<b>Vibration</b>	10 G, 10 ... 2000 Hz (IEC 60068-2-6)
<b>Moment of inertia</b>	45 x 10 <sup>-6</sup> kgm <sup>2</sup>
<b>Starting torque (at +20°C / +68°F)</b>	< 0,02 Nm
<b>Body material</b>	EN-AW 2011 aluminum
<b>Shaft material</b>	up to ø 38 mm: EN-AW 2011 aluminum ø 40 mm: 1.4305/AISI 303 stainless steel
<b>Housing material</b>	EN-AW 2011 aluminum
<b>Bearings</b>	2 ball bearings
<b>Bearings life</b>	10 <sup>9</sup> revolutions
<b>Operating temperature</b>	-30° ... +85°C (-22° ... +185°F)
<b>Storage temperature</b>	-30° ... +85°C (-22° ... +185°F)
<b>Fixing torque for collar clamping</b>	1 Nm recommended
<b>Weight</b>	350 g (12,35 oz)

### CONNECTIONS

Function	Cable output push-pull	Cable output Line driver
+V DC	red	red
0 V	black	black
Ch. A	green	green
Ch. A-	/	brown
Ch. B	yellow	yellow
Ch. B-	/	orange
Ch. Z	blue	blue
Ch. Z-	/	white
⊥	shield	shield