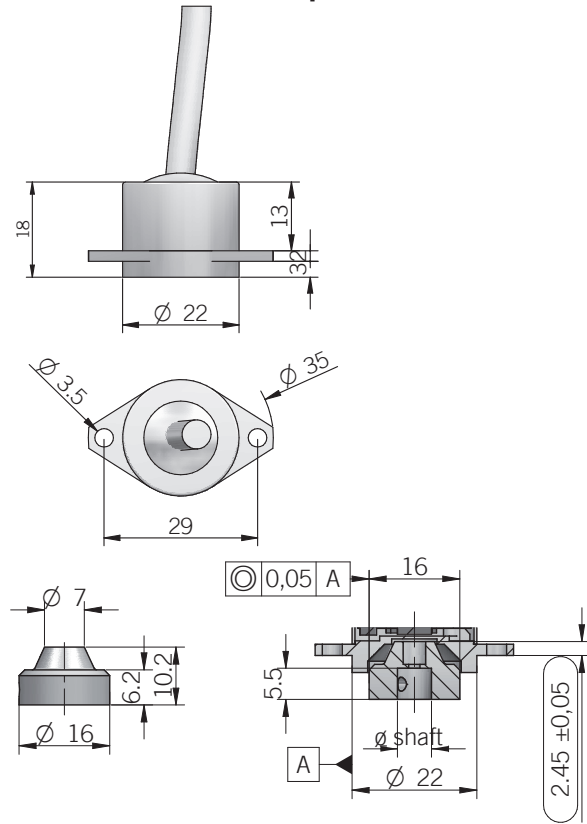
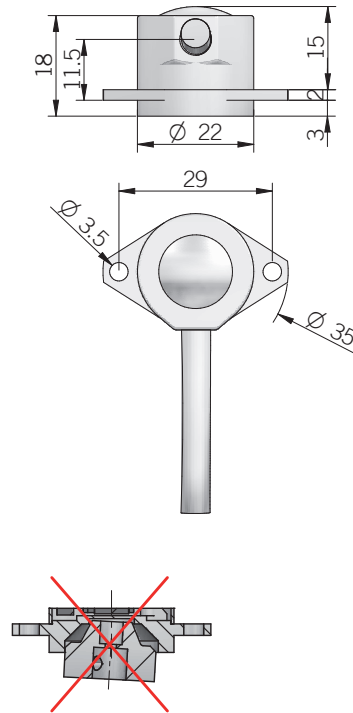




### EMI 22 axial cable output



### EMI 22 radial cable output



#### ELECTRICAL SPECIFICATIONS

<b>Resolution</b>	from 2 to 2048 ppr
<b>Power supply</b>	5 = 4,5 ... 5,5 V DC
<b>Current consumption without load</b>	100 mA max
<b>Max load current</b>	15 mA / channel
<b>Output type*</b>	push-pull / line driver RS-422
<b>Max output frequency</b>	205 kHz
<b>Counting direction</b>	A leads B with clockwise rotation (magnet-actuator view)
<b>Accuracy</b>	± 0,35° typical / ± 0,50° max
<b>Electromagnetic</b>	IEC 61000-6-2 IEC 61000-6-3

#### MECHANICAL SPECIFICATIONS

<b>Bore diameter (magnet-actuator)</b>	∅ 6 / 8 / 9,52 (3/8") / 10 mm
<b>Enclosure rating</b>	IP 67 (IEC 60529)
<b>Max rotation speed</b>	10000 rpm
<b>Shock</b>	50 G, 11 ms (IEC 60068-2-27)
<b>Vibration</b>	10 G, 10 ... 2000 Hz (IEC 60068-2-6)
<b>Moment of inertia (magnet-actuator)</b>	0,1 x 10 <sup>-6</sup> kgm
<b>Body material</b>	EN-AW 2011 aluminum
<b>Shaft material</b>	EN-AW 2011 aluminum
<b>Housing material</b>	EN-AW 2011 aluminum
<b>Operating temperature</b>	-40° ... +125°C (-40° ... +257°F)
<b>Storage temperature</b>	-25° ... +85°C (-13° ... +185°F)
<b>Weight</b>	30 g (1,06 oz)
<b>Magnet actuator mounting tolerances (to get best electrical performances)</b>	± 0,2 mm (axial) ± 0,1 mm (radial)

#### CONNECTIONS

Function	Cable output Push-pull	Cable output Line driver
+V DC	red	red
0 V	black	black
Ch. A	green	green
Ch. A-	/	brown
Ch. B	yellow	yellow
Ch. B-	/	orange
Ch. Z	blue	blue
Ch. Z-	/	white
⊕	shield	shield

#### RESOLUTIONS

2 - 4 - 8 - 10 - 16 - 20 - 32 - 40 - 64 - 80 - 100 - 125 - 128 - 200 - 250 - 256 - 400 - 500 - 512 - 1024 - 2048

*please directly contact our offices for other pulses*