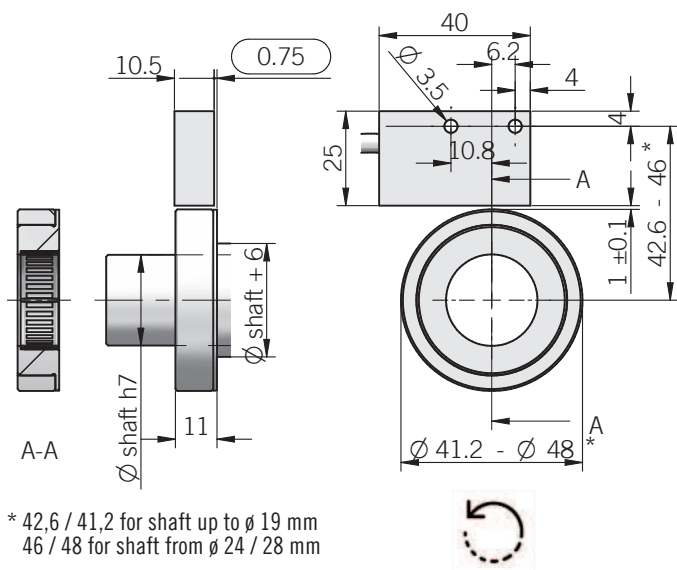
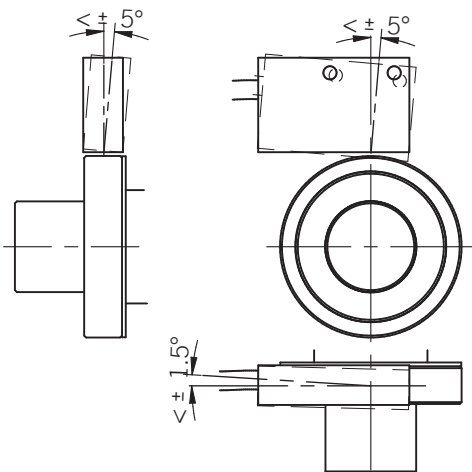


ETMR



* 42,6 / 41,2 for shaft up to \varnothing 19 mm
46 / 48 for shaft from \varnothing 24 / 28 mm

Mounting tolerances



dimensions in mm

ELECTRICAL SPECIFICATIONS

Resolution	from 64 to 4096 ppr (powers of 2)
Power supply	5 = 4,5 ... 5,5 V DC 5/28 = 4,75 ... 29,4 V DC 8/24 = 7,6 ... 25,2 V DC (reverse polarity protection)
Power draw without load	800 mW max
Max load current	20 mA / channel
Output type*	push-pull / line driver
Max output frequency	350 kHz
Linearity error	$\pm 0,35^\circ$ typical
Counting direction	A leads B counterclockwise
Electromagnetic compatibility	IEC 61000-6-2 IEC 61000-6-4

*output levels according to power supply, for further details please see under Technical basics section

MECHANICAL SPECIFICATIONS

Bore diameter	\varnothing 9 / 9,52 (3/8") / 10 / 11 / 14 / 19 / 24 / 28 mm En-
closure rating	IP 67 (IEC 60529)
Max rotation speed	8000 rpm
Shock	50 G, 11 ms (IEC 60068-2-27)
Vibration	20 G, 10 ... 2000 Hz (IEC 60068-2-6)
Moment of inertia	$115 \times 10^{-6} \text{ kgm}^2$ ($27,29 \times 10^{-4} \text{ lbft}^2$)
Sensor body material	anodized aluminum
Magnet-actuator material	1.4305 / AISI 303 stainless steel
Operating temperature	$-20^\circ \dots +85^\circ \text{C}$ ($-4^\circ \dots +185^\circ \text{F}$)
Storage temperature	$-20^\circ \dots +85^\circ \text{C}$ ($-4^\circ \dots +185^\circ \text{F}$)
Weight	100 g (3,53 oz)
Magnet-actuator mounting tolerances	$\pm 1 \text{ mm}$ (axial) $\pm 0.1 \text{ mm}$ (radial)

RESOLUTIONS

64* - 128 - 256 - 512 - 1024 - 2048 - 4096

* available with shaft \varnothing 24 / 28 mm; please directly contact our offices for other pulses

CONNECTIONS

Function	Cable output Push-pull	Cable output Line driver
+V DC	red	red
0 V	black	black
Ch. A	green	green
Ch. A-	/	brown
Ch. B	yellow	yellow
Ch. B-	/	orange
Ch. Z	blue	blue
Ch. Z-	/	white
---	shield	shield