

EH 88 PE / PET

THROUGH HOLLOW SHAFT INCREMENTAL ENCODER



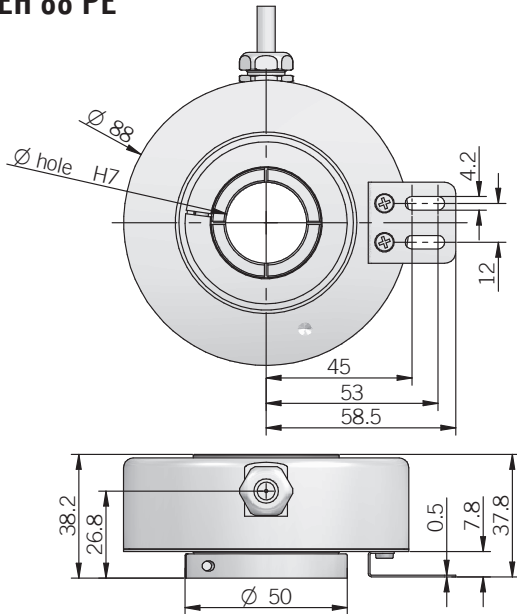
Specifications

Cost effective encoder for asynchronous motors, suitable for elevators and stage machinery.

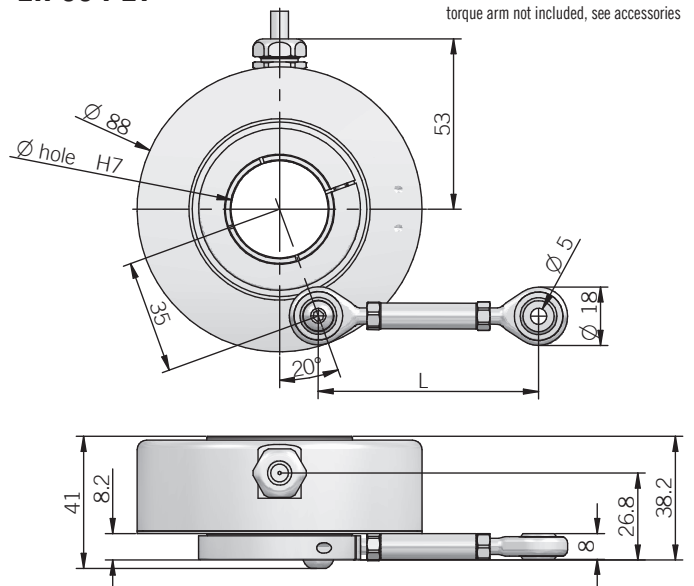
- 3 channel encoder (A / B / Z) up to 2500 ppr
- Power supply up to +28 VDC with several electronic interfaces available
- Up to 105 kHz output frequency
- Cable output, connector available on cable end
- Sturdy mechanic
- Up to 40 mm bore diameter
- Shaft fixing by collar clamping

ORDERING CODE	EH	88PE	1024	S	5/28	P	30	X	3	PR	.XXX
SERIES incremental encoder series EH											
MODEL through hollow shaft with torque pin 88PE through hollow shaft for torque arm fixing 88PET											
RESOLUTION ppr from 500 to 2500 see table for pulses availability											
ZERO PULSE without zero pulse S with zero pulse Z											
POWER SUPPLY (with L electronic interface) 5 V DC 5 (reverse polarity protection) 8 ... 24 V DC 8/24 5 ... 28 V DC 5/28											
ELECTRONIC INTERFACE push-pull (AEIC-7272) P line driver L power supply 5/28V - output RS-422 RS											
BORE DIAMETER mm 25 mm 30 (mod. PE) mm 35 (mod. PE) mm 38 (mod. PE) mm 40											
ENCLOSURE RATING IP 54 X											
MAX ROTATION SPEED 3000 rpm 3											
OUTPUT TYPE radial cable (standard length 0,5 m) PR											
VARIANT custom version XXX											

EH 88 PE



EH 88 PET



ELECTRICAL SPECIFICATIONS

Resolution	from 500 to 2500 ppr
Power supply	5 = 4,5 ... 5,5 V DC 5/28 = 4,75 ... 29,4 V DC 8/24 = 7,6 ... 25,2 V DC (reverse polarity protection)
Power draw without load	800 mW
Max load current	20 mA / channel
Output type*	push-pull / line driver
Max output frequency	105 kHz
Counting direction	A leads B clockwise (shaft view)
Electromagnetic compatibility	IEC 61000-6-2 IEC 61000-6-3

*output levels according to power supply, for further details please see under Technical basics section

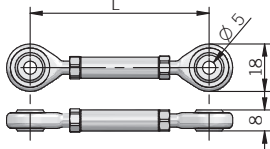
RESOLUTIONS

500 - 512 - 720 - **1000** - **1024** - 1440 - 2500

please directly contact our offices for other pulses, preferred resolutions in bold

ACCESSORIES

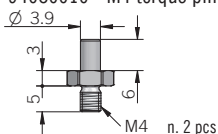
Torque arm (mod. PET)



n. 2 M5 x 12 UNI ISO 7380 included

Length	Ordering code
L = 80 ± 10mm	SN5A30 (P/N 94010061)
L = 110 ± 10mm	SN5A60 (P/N 94010070)
L = 140 ± 10mm	SN5A90 (P/N 94010071)

94080010 - M4 torque pin kit (mod. PE)



n. 2 pcs

MECHANICAL SPECIFICATIONS

Bore diameter	\varnothing 25 / 30 / 35 / 38 / 40 mm
Enclosure rating	IP 54 (IEC 60529)
Max rotation speed	3000 rpm
Shock	50 G, 11 ms (IEC 60068-2-27)
Vibration	10 G, 10 ... 2000 Hz (IEC 60068-2-6)
Moment of inertia	$45 \times 10^{-6} \text{ kgm}^2$
Starting torque (at +20°C / +68°F)	< 0,02 Nm
Body material	EN-AW 2011 aluminum
Shaft material	up to \varnothing 38 mm: EN-AW 2011 aluminum \varnothing 40 mm: 1.4305/AISI 303 stainless steel
Housing material	EN-AW 2011 aluminum
Bearings	2 ball bearings
Bearings life	10^9 revolutions
Operating temperature	-30° ... +85°C (-22° ... +185°F)
Storage temperature	-30° ... +85°C (-22° ... +185°F)
Fixing torque for collar clamping	1 Nm recommended
Weight	350 g (12,35 oz)

CONNECTIONS

Function	Cable output push-pull	Cable output Line driver
+V DC	red	red
0 V	black	black
Ch. A	green	green
Ch. A-	/	brown
Ch. B	yellow	yellow
Ch. B-	/	orange
Ch. Z	blue	blue
Ch. Z-	/	white
⊥	shield	shield